



**India Meteorological Department
(Ministry of Earth Sciences)**

SPECIAL BULLETIN

TIME OF ISSUE: 1250 HOURS IST

DATED: 29.09.2021

FROM: INDIA METEOROLOGICAL DEPARTMENT (FAX NO. 24643965/24699216/24623220)

**TO: CONTROL ROOM, NDM, MINISTRY OF HOME AFFAIRS (FAX.NO. 23093750)
CONTROL ROOM NDMA (FAX.NO. 26701729)
CABINET SECRETARIAT (FAX.NO.23012284, 23018638)
PS TO HON'BLE MINISTER FOR S & T AND EARTH SCIENCES (FAX NO.23316745)
SECRETARY, MOES, (FAX NO. 24629777)
H.Q. (INTEGRATED DEFENCE STAFF AND CDS) (FAX NO. 23005137/23005147)
DIRECTOR GENERAL, DOORDARSHAN (23385843)
DIRECTOR GENERAL, AIR (23421105, 23421219)
PIB MOES (FAX NO. 23389042)
UNI (FAX NO. 23355841)
D.G. NATIONAL DISASTER RESPONSE FORCE (NDRF) (FAX NO. 26105912, 2436 3260)
DIRECTOR, PUNCTUALITY, INDIAN RAILWAYS (FAX NO. 23388503)
CHIEF SECRETARY, MAHARASHTRA (FAX NO 022-22028594)
CHIEF SECRETARY, GUJARAT (FAX NO 079-23250305)
CHIEF SECRETARY, DAMAN,DIU,DADRA & NAGAR HAVELI (FAX NO 0260-2230775)
CHIEF SECRETARY, GOA (FAX NO 0832-2415201)
CHIEF SECRETARY, KARNATAKA (FAX NO 080-22258913)
CHIEF SECRETARY, KERALA (FAX NO 0471-2327176)
ADMINISTRATOR, LAKSHADWEEP (FAX NO 022-22028594)**

Sub: Well marked low pressure area over south Gujarat region & adjoining Gulf of Khambhat & likely intensification into a Depression over northeast Arabian Sea by tomorrow morning.

The remnant of the Cyclonic Storm 'Gulab' lay as a well marked low pressure area over south Gujarat region & adjoining Gulf of Khambhat at 0830 hrs IST of today, the 29th September. It is very likely to move west-northwestwards, emerge into northeast Arabian Sea & intensify into a Depression by tomorrow, the 30th Sept. 2021, morning. Then it is very likely to move further west-northwestwards and intensify into a Cyclonic Storm during the subsequent 24 hours. Thereafter it is likely to continue to move west-northwestwards towards Pakistan – Makran coasts, moving away from the Indian coast.

Warnings:

(i) Rainfall

- 29th Sept.: Light to moderate rainfall at most places with heavy to very heavy falls at a few places & extremely heavy falls at isolated places very likely over Saurashtra & Kutch and heavy to very heavy & extremely heavy falls at isolated places over Gujarat region, Daman, Diu, Dadra & Nagar Haveli and heavy to very heavy falls at isolated places over north Konkan.
- 30th Sept.: Light to moderate rainfall at most places with heavy to very heavy falls at isolated places very likely over Saurashtra & Kutch and heavy falls at isolated places over Gujarat region and north Konkan.

(ii) Wind warning

- Squally wind speed reaching 45-55 kmph gusting to 65 kmph likely to prevail over northeast Arabian Sea and along & off south Gujarat coast and 40 – 50 kmph gusting to 60 kmph over east-central Arabian Sea along & off north Maharashtra coast during next 12 hours.
- It would gradually increase thereafter, becoming squally wind speed reaching 50-60 kmph gusting to 70 kmph over northeast Arabian Sea and along & off Gujarat coast and 45 – 55 kmph gusting to 65 kmph over east-central Arabian Sea along & off north Maharashtra coast from tomorrow, the 30th September, early morning.
- It would further increase becoming Gale wind speed reaching 80-90 kmph gusting to 100 kmph over northeast & adjoining northwest Arabian Sea & along & off Pakistan – Makran coasts, 70-80 kmph gusting to 90 kmph along & off Gujarat coast and squally wind speed reaching 40 – 50 kmph gusting to 60 kmph over central Arabian Sea on 1st October.

(iii) Sea condition

- Sea condition will be rough to very rough over northeast Arabian Sea and adjoining east-central Arabian Sea & along & off Gujarat – north Maharashtra coasts till 30th Sept. 2021.
- Sea condition will be 'High' over Northeast Arabian Sea and along & off Gujarat coast and adjoining eastcentral Arabian Sea and along and off Pakistan coast and rough to very rough along & off north Maharashtra coast on 1st October 2021.
- Sea condition will be 'High to very High' over north Arabian Sea and along and off north Pakistan – Makran coasts and 'High' over adjoining central Arabian Sea, very rough to High along & off north Gujarat coast on 2nd October.

(iv) Fishermen Warning

- Fishermen are advised not to venture into north & adjoining central Arabian Sea and along & off Gujarat & north Maharashtra coasts from 30th September till 2nd October 2021.
- Fishermen who are out at Sea over the above region are advised to return to safer places / back to coast by today evening.

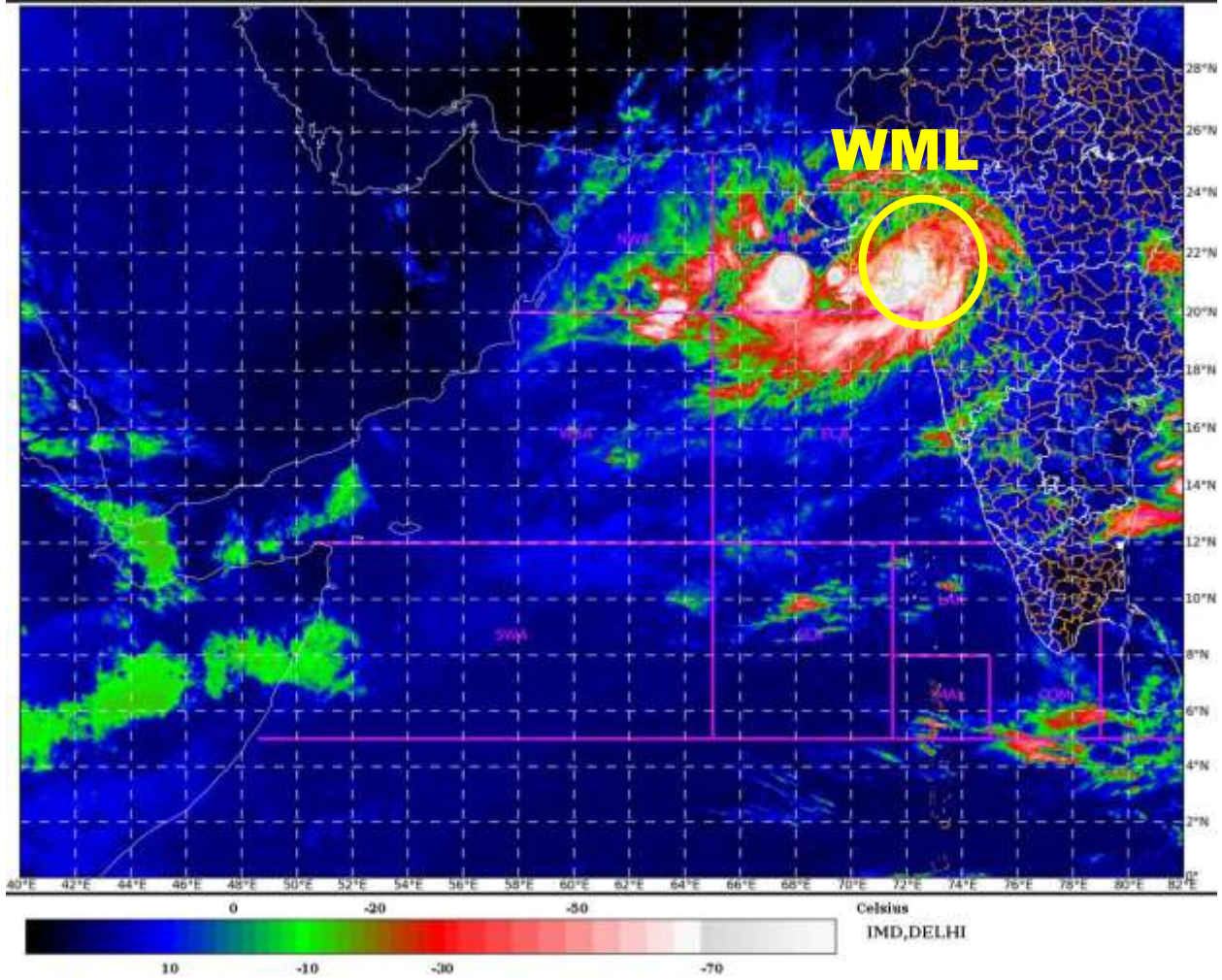
(v) EXPECTED IMPACT & ACTION SUGGESTED

- As the system is expected to move away from the Indian coast, apart from the impact associated with the extremely heavy rain events over Gujarat during next 24 hours, no further impact is likely over the Indian Mainland.
- However, Fishermen as well as Mariners are advised to avoid the Sea areas specified above.
- Also the On-shore & Off-shore installations located off Gujarat coast are advised to stall operations on 30th September & 1st October.
- Tourism & recreational activities along & off Gujarat coast also may be suspended on 30th Sept. & 1st October 2021.

**(Sunitha Devi S.)
Scientist-F, RSMC, New Delhi**

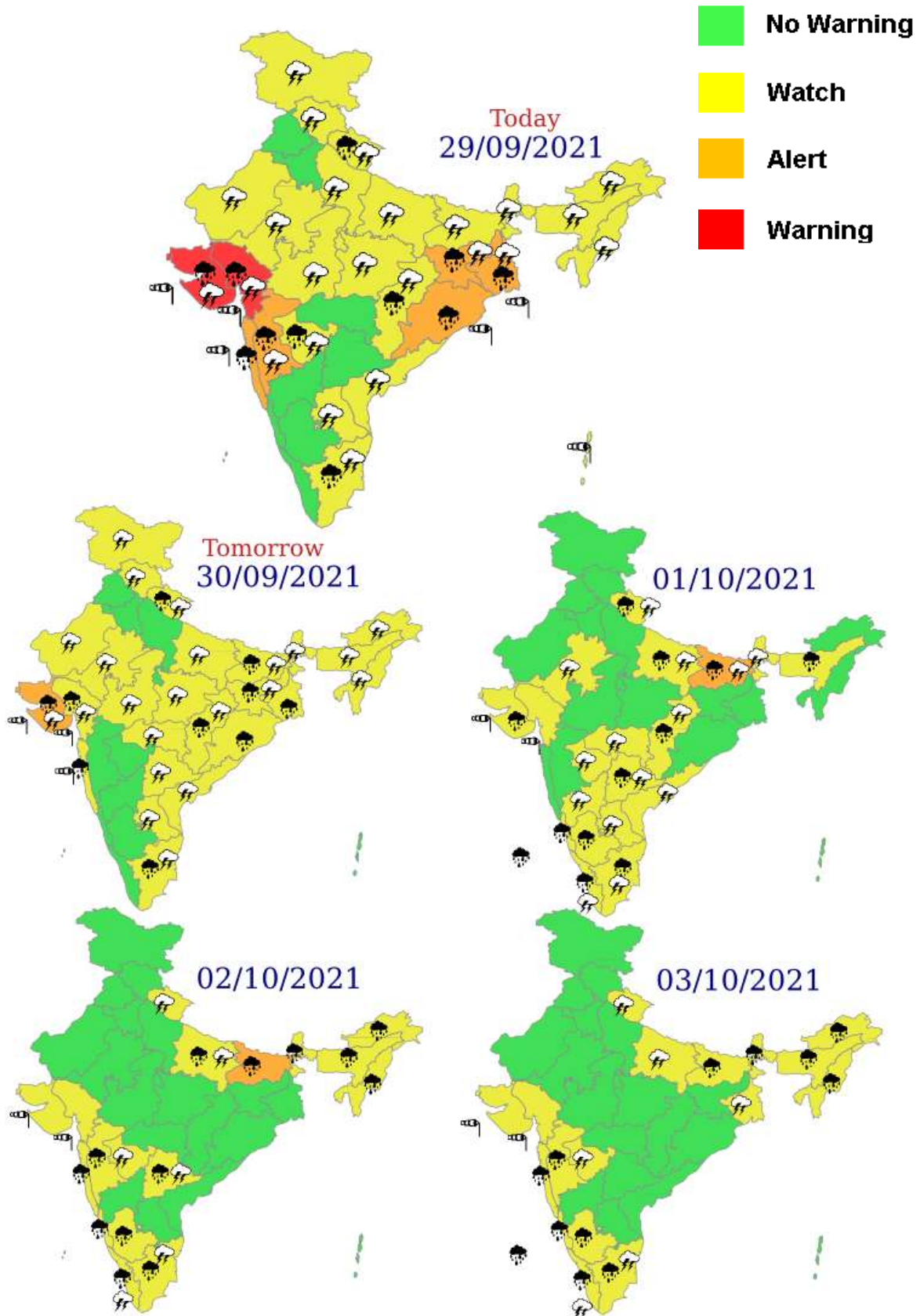
Copy to: ACWC Mumbai/ CWC Ahmedabadr/MC Goa/CWC Thiruvananthapuram

LEGEND: Heavy Rainfall: 64.5 to 115.5mm, **Very Heavy Rainfall:** 115.6 to 204.4mm, **Extremely Heavy Rainfall:** 204.5mm or more. **Many Places:** 51% to 75% of the stations, **Most Places:** more than 76% of total stations, **Isolated Places:** Less than 25% of total stations



WML: Well Marked Low Pressure Area

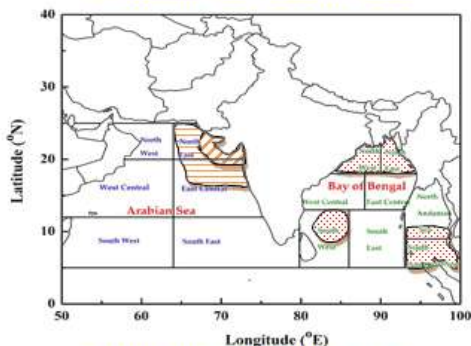
Sub-division wise heavy rainfall warning for next 5 days



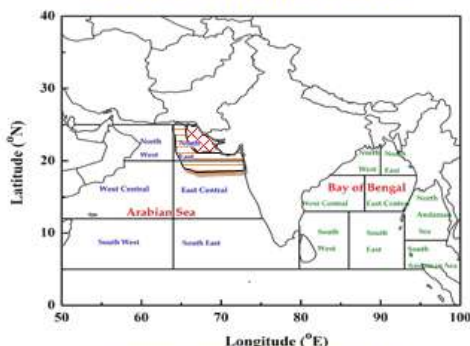
Fishermen Warning Graphics

INDIA METEOROLOGICAL DEPARTMENT FISHERMAN WARNING FOR BAY OF BENGAL AND ARABIAN SEA

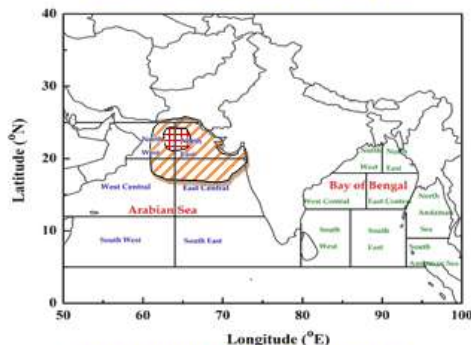
DAY-1: 29.09.2021/0600 UTC TO 30.09.2021/0600 UTC



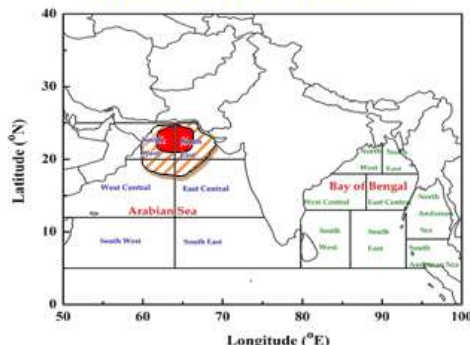
DAY-2: 30.09.2021/0600 UTC TO 01.10.2021/0600 UTC



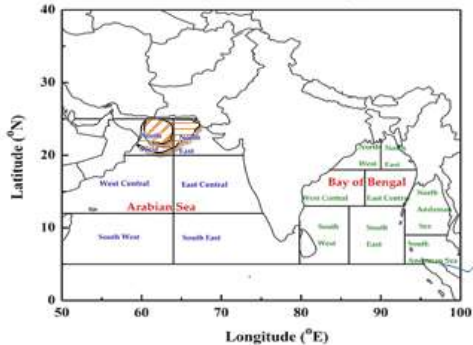
DAY-3: 01.10.2021/0600 UTC TO 02.10.2021/0600 UTC



DAY-4: 02.10.2021/0600 UTC TO 03.10.2021/0600 UTC



DAY-5: 03.10.2021/0600 UTC TO 04.10.2021/0600 UTC



AREA UNDER FISHERMEN WARNING

- 40-50 KMPH GUSTING TO 60 KMPH (SQUALLY WEATHER)
- 45-55 KMPH GUSTING TO 65 KMPH (STRONG WIND)
- 50-60 KMPH GUSTING TO 70 KMPH (STRONG WIND)
- 70-80 KMPH GUSTING TO 90 KMPH (STRONG WIND)
- 80-90 KMPH GUSTING TO 100 KMPH (STRONG WIND)
- 90-100 KMPH GUSTING TO 110 KMPH (STRONG WIND)
- 95-105 KMPH GUSTING TO 115 KMPH (STRONG WIND)